



*Winch Crank Reduction Drive 08-35-00-00
Installation Instructions*

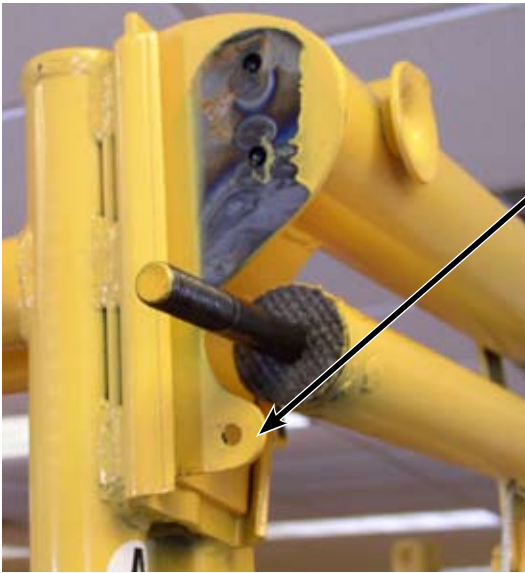


⚠ WARNING ⚠

Read and become familiar with this manual before installing

Before installing or operating this Reduction Drive, thoroughly read this set of instructions, make sure you understand them, and only then follow the step by step directions. Failure to do so could result in serious property damage and/or serious bodily injury.

Made In U.S.A. by **Telpro Inc.**



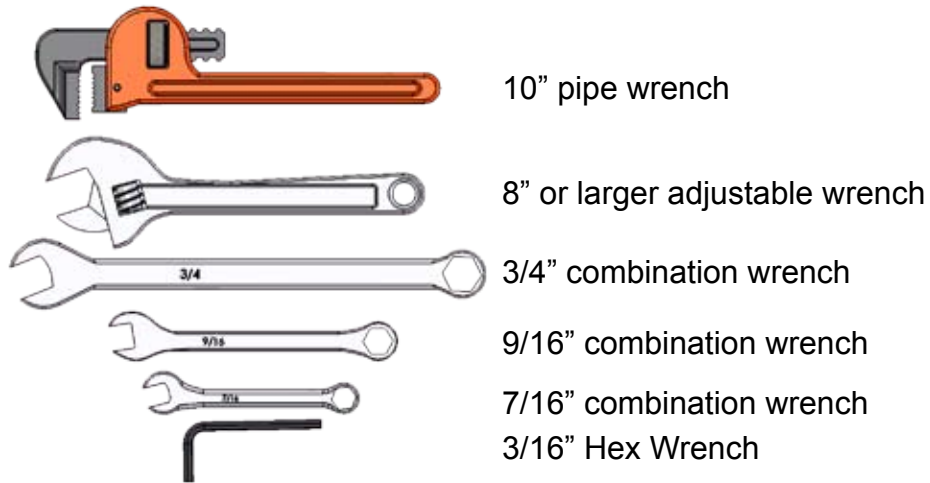
WARNING: This Tele-Tower® winch reduction drive is designed and intended for installation and use ONLY on Tele-Tower® Adjustable Work Platforms Model 1101 or 1101-96 equipped with the proper support mount on the end of the beam as shown in the photo at left. Installation of the reduction drive on a Tele-Tower® without the necessary support mount can result in failure of the unit possibly resulting in serious property damage and/or serious bodily injury.

Tele-Tower® Adjustable Work Platforms with the necessary support mount have a “J” series serial number 003466 or higher located on the side of the winch beam assembly.



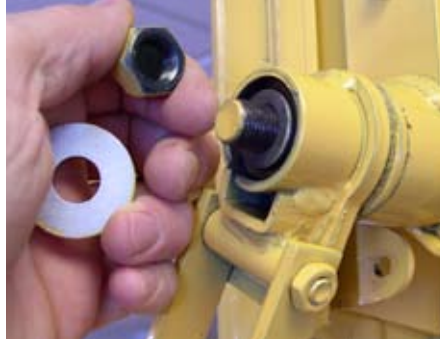
Before you begin:

Tools needed:



Begin with a Tele-Tower® assembled and in the fully lowered position. There should be no tension on the elevating cable.

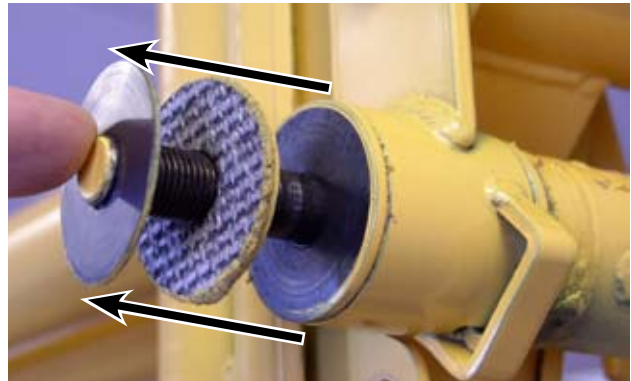
Removal of Standard Crank Handle:



1) Remove special ½" cap nut and washer from the end of the winch tube. Control the rotation of the tube with a pipe wrench or pliers gripping the welded area of tube as shown. Caution: Contact with the wrench further in on the tube may damage the tube.



2) Turn handle counter clockwise to unscrew and remove it.



3) Remove the plastic washer and the outer fiber washer.

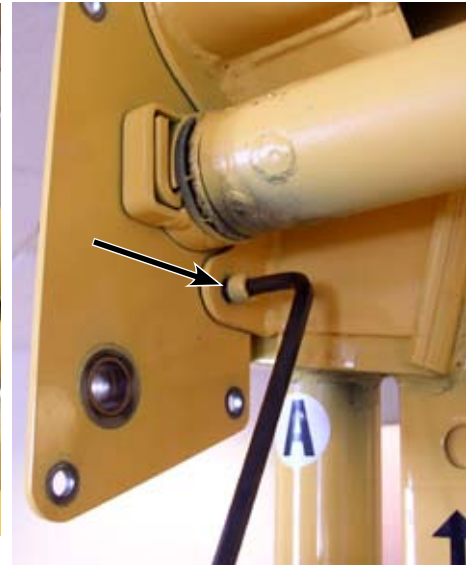
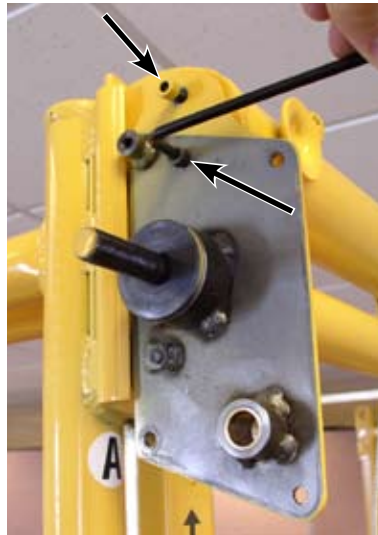


4) Remove standard hanger bracket assembly by removing two socket head screws using a 3/16" hex wrench.
IMPORTANT: Save these parts in the event that you wish to return the beam to its standard configuration.

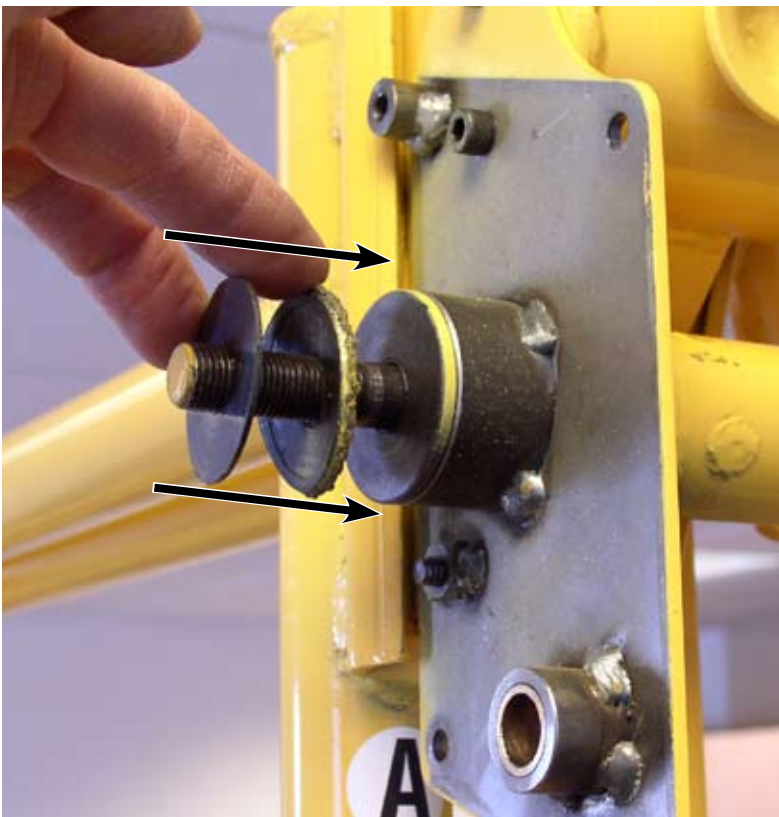
Installation of Reduction Drive:



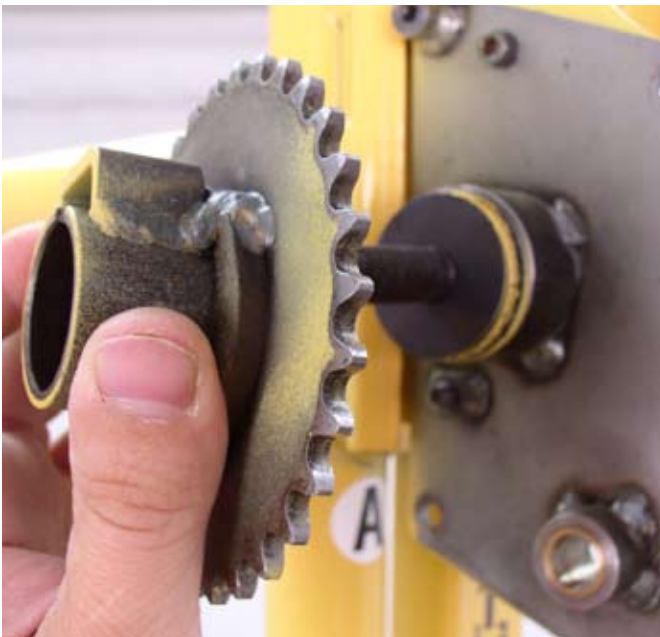
5) Remove the inner fiber washer and replace it with the new one provided.



6) Install inner hanger bracket plate and tighten the three socket head screws. Note that one socket head screw comes in from behind.



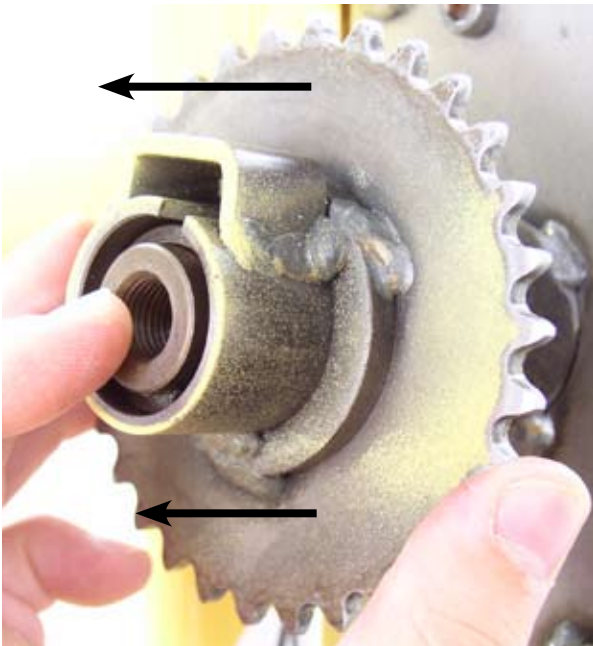
7) Install the outer fiber washer followed by the plastic washer.



8) Slide the sprocket all the way onto the winch tube bolt.



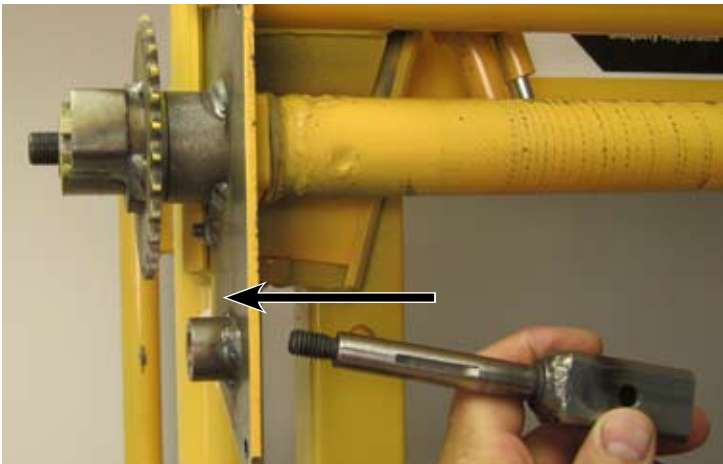
9) Thread the serrated bushing with the torsion spring onto the winch tube bolt until the torsion spring contacts the edge of the bushing housing as shown. **IMPORTANT: Make sure** the serrated end of the bushing goes on first and into the bushing housing as shown. Failure to install this bushing as shown will prevent correct assembly and operation of the reduction drive.



10) While holding the serrated bushing in place, align the slot in the bushing housing with the protruding end of the torsion spring and slide the sprocket out until the serrated bushing is fully seated within the housing. The outer (smooth) end of the serrated bushing will be flush with the housing.



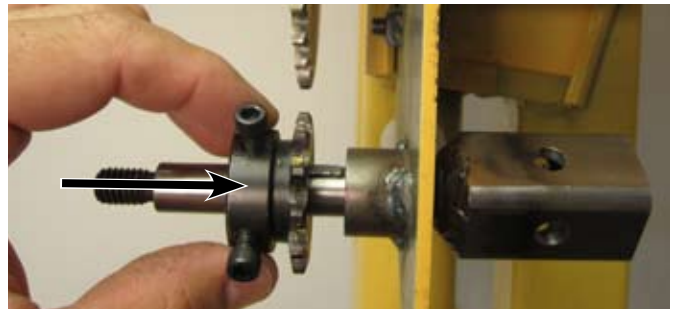
11) Rotate the sprocket clockwise until the serrated bushing is fully threaded onto the winch tube bolt.



12) Insert the input shaft from behind the inner hanger bracket plate.



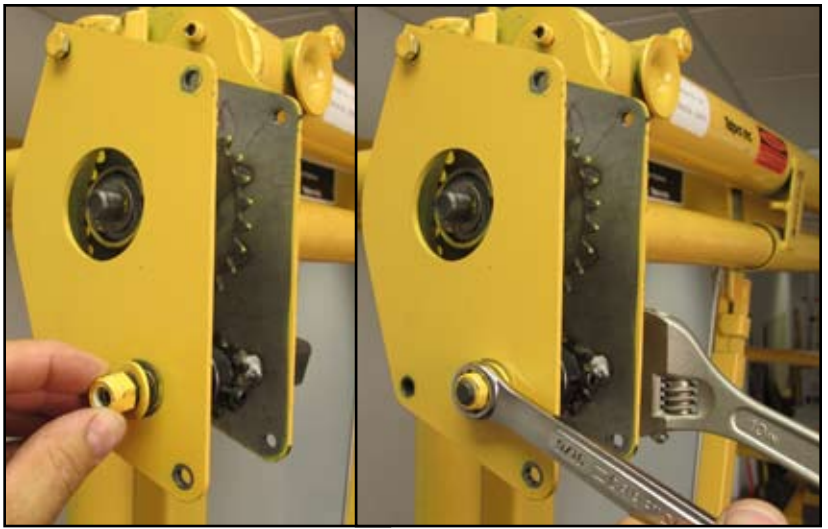
13) Install the key in the slot of the shaft



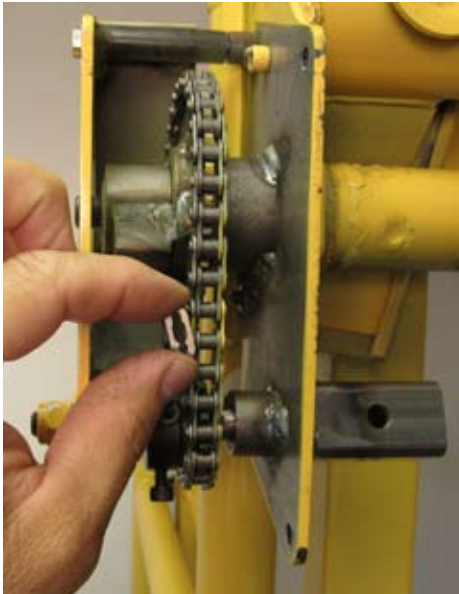
14) Slide the 12 tooth sprocket onto the shaft with the teeth on first AS SHOWN. DO NOT tighten the set screws at this time.



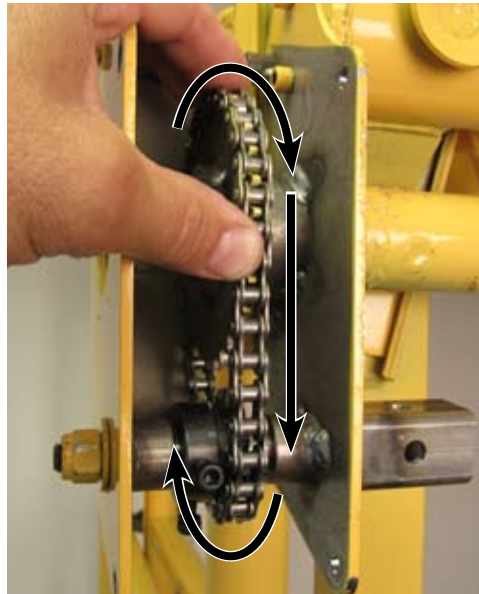
15) Install the outer hanger bracket by starting the single 1/4" x 2 1/2" bolt in the uppermost hole as shown. DO NOT fully tighten this bolt at this time. (Wait until step 19 below.)



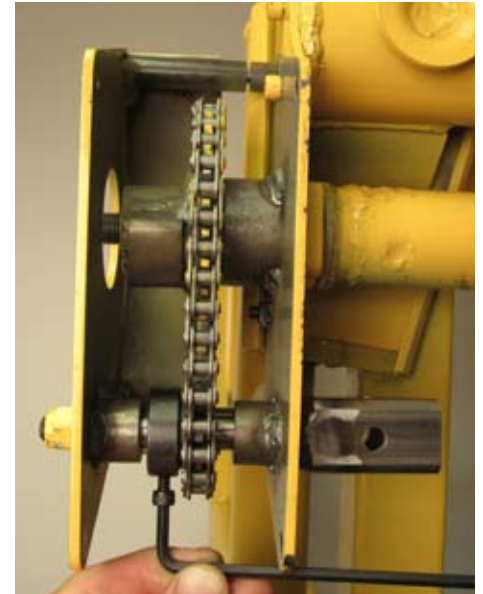
16) Install flat washer and 3/8" locknut on input shaft and tighten until it is snug.



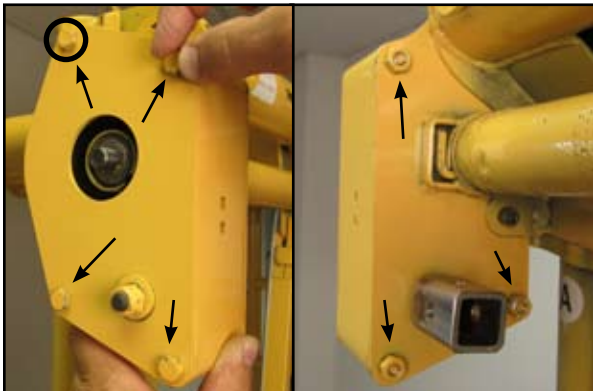
17) Install drive chain and secure with master link.



18) Rotate sprockets and chain in direction shown until 30 tooth sprocket is snug against the plastic washer.



19) Align 12 tooth sprocket with 30 tooth sprocket and tighten both set screws on the 12 tooth sprocket.



20) Install chain guard and secure with nuts. Tighten the uppermost bolt at this time also.



21) Install 1/2" washer and cap nut.



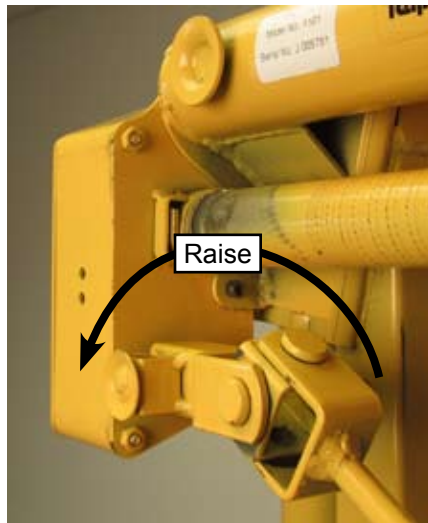
22) Tighten cap nut until snug. Control the rotation of the winch tube with a pipe wrench or pliers by gripping the welded areas as shown above and as in step 1.

CAUTION:

- Contact with the wrench further in on the winch tube may damage the tube.
- Do not use excessive force to tighten this cap nut. When the cap nut is properly tightened, the 1/2" washer beneath it will have some free play. The cap nut is specially designed with a specific internal depth to provide proper end play for the correct functioning of the winch mechanism.



23) Attach crank handle to input shaft tube as shown. Secure in place with pull pin.



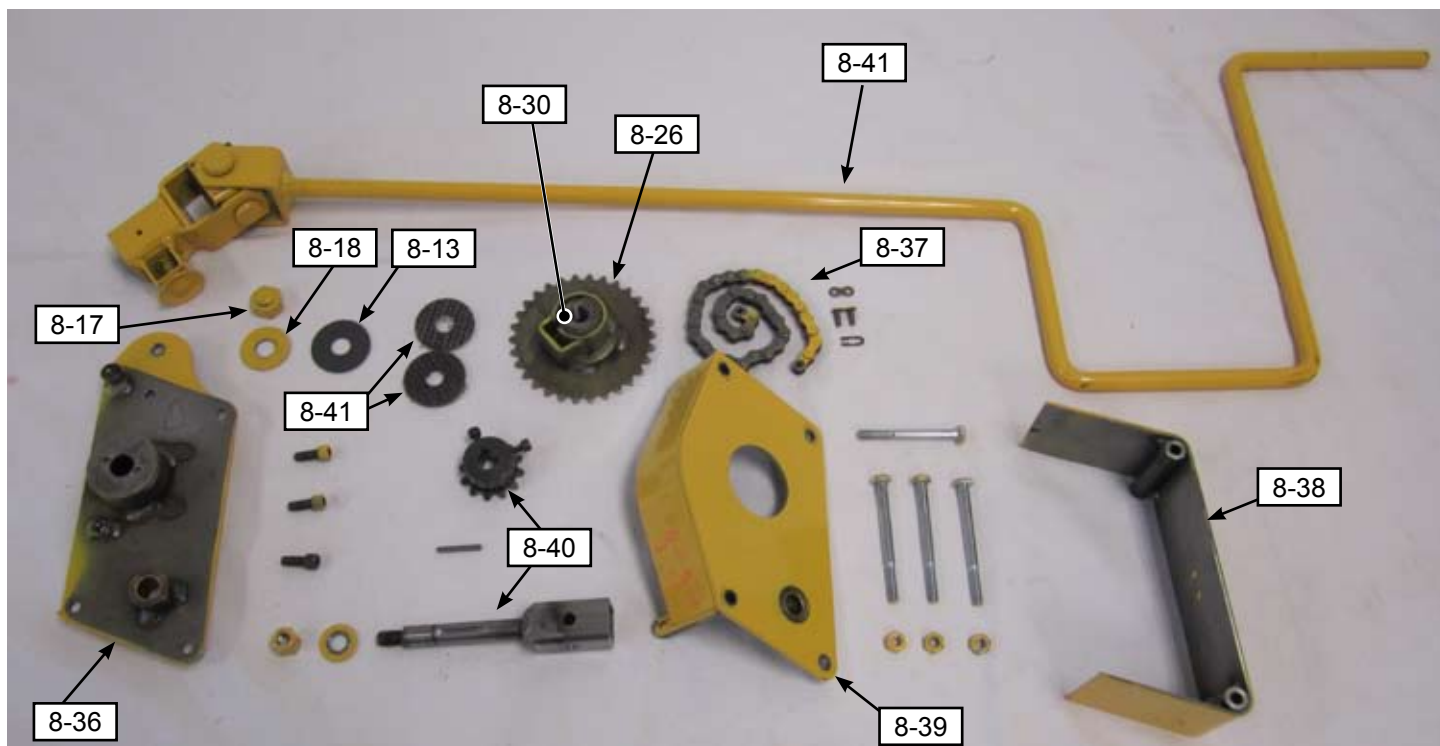
24) Turn crank handle in direction shown to raise the platform and in reverse direction to lower.



ALWAYS:

- Engage all four ladder lock pins before climbing.
- Keep cable wrapped taut on winch tube and under cable sheaves.
- Thoroughly read the Tele-Tower® Operator's Manual and be sure you understand and follow all instructions and warnings it contains before using this equipment.

Parts Index



Part No.	Description	Quantity
8-08	Fiber Washer	2
8-13	Plastic Washer 1/2" Hole	1
8-17	1/2" NF Cap Nut	1
8-18	1/2" Washer	1
8-26	30 Tooth Sprocket	1
8-30	Serrated End Bushing w/ Spring	1
8-36	Inner Hanger Bracket Assembly w/ Fasteners	1
8-37	#35 Drive Chain w/ master link	1
8-38	Chain Guard	1
8-39	Outer Hanger Bracket Assembly w/ Fasteners	1
8-40	Input shaft w/ 12 tooth sprocket & Fasteners	1
8-41	Crank Handle Assembly	1

Telpro Inc.

7251 S 42nd St.
 Grand Forks, ND 58201
 701-775-0551
 1-800-448-0822
 www.telproinc.com